

## ERRATA

Volume 77, Number 3, August 8, 1977

In "Does Chronic Alcohol Consumption Really Induce Hepatic Microsomal Gamma-Glutamyltransferase Activity?" by Jorg Morland, Nils-Erik Huseby, Mats Sjoblom and Johan H. Stromme, pp. 1060-1066: On p. 1063, Figures 1 and 2 were incorrect as published. The correct figures and their captions follow:

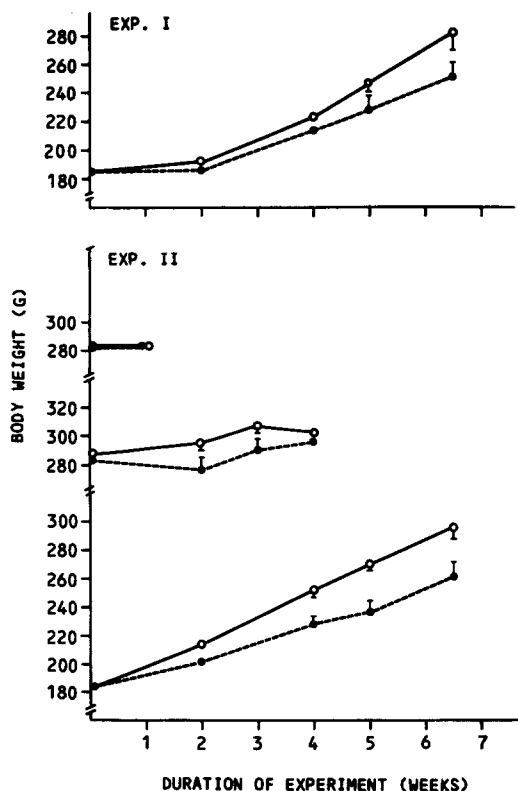
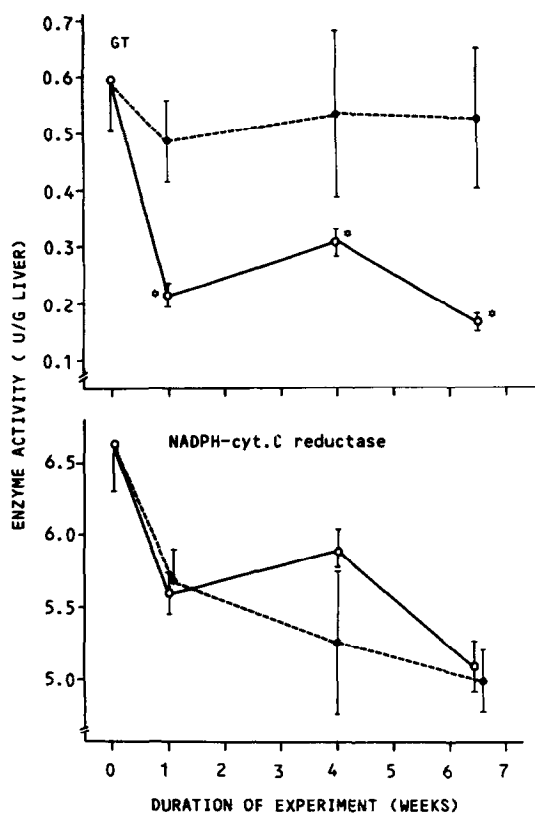


Fig. 1. Body weight of rats fed a diet in which ethanol constituted 36 per cent of the calories •---• or a control diet in which carbohydrates replaced ethanol isocalorically o—o. Each point represents the mean of 5 or 6 animals, the bars indicate S.E.M.



**Fig. 2.** Liver  $\gamma$ -glutamyltransferase (GT) activity (upper part) and NADPH-cytochrome C reductase activity (lower part) in rats fed the ethanol●---● and control diet ○—○, for various periods. Each point represents the mean of 5 or 6 animals, the bars indicate  $\pm$  S.E.M.

Volume 78, Number 3, October 10, 1977

In "Rapid Thin Layer Chromatographic Separation of Para-Phenylazophenyl Thiohydantoins of Amino Acids," by Shompa Datta and Salil C. Datta, pp. 1074-1078, on p. 1077, the heading for columns 2 and 3 of Table I should read "Rec.(%)."